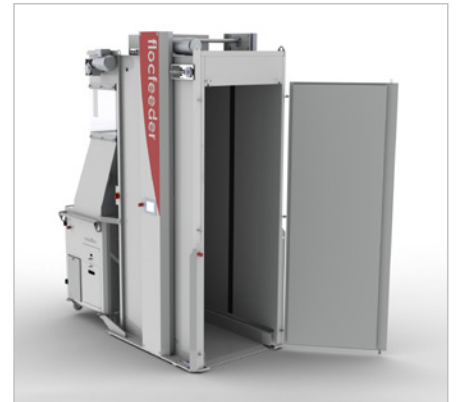




- ❶ The easyfloc blowing plate, the flocfeeder big bale shredder and the maxifloc high-performance blowing machine make up the isofloc injection system.
- ❷ The isofloc cellulose big bales are pre-shredded in the flocfeeder and then fed to the maxifloc blowing machine.



**Increase the efficiency and cost-effectiveness of the industrial insulation of timber construction elements with the flocfeeder big bale shredder and isofloc cellulose big bales. With flocfeeder, big bales are processed automatically with minimum dead times.**

#### Application area

flocfeeder is aimed at the efficient insulation of elements in stationary industrial timber construction in the upper performance range. The big bale shredder, together with the maxifloc high-performance blowing machine and the easyfloc blowing plate, makes up the new industrial isofloc insulation system.

#### Operation

flocfeeder is simple to operate by means of a touchscreen. The work process is fully automatic; the operating status and operating data are displayed numerically and graphically.

#### Properties

The pressed isofloc cellulose big bales weighing 350 kg are pre-shredded in the flocfeeder and then fed to the ma-

xifloc blowing machine. In conjunction with maxifloc and the easyfloc blowing plate, flocfeeder only needs to be fed with big bales; after that the injection operation takes place automatically. flocfeeder is equipped as standard with weighing cells. Hence, in combination with easyfloc, the injection weight of each individual compartment is measured, displayed and saved for quality assurance purposes. flocfeeder can be extended with a feeder section for big bales for increasing the degree of automation. The complete injection system can be adapted modularly to the individual customer's needs.

#### Safety

The machine conforms to the CE safety regulations.

#### Has flocfeeder aroused your interest?

We will be happy to present flocfeeder to you in the context of a personal discussion and to invite you to a demonstration at our factory. Fill an element yourself and see the advantages of the isofloc insulation system at first hand. We look forward to receiving your call.

#### Your advantages with flocfeeder and isofloc big cellulose bales:

- high filling performance
- automatic filling process in combination with easyfloc
- increase in efficiency
- high cost-effectiveness
- minimisation of idling and dead times
- suitable for all common high-performance blowing machines due to its high throughput\*

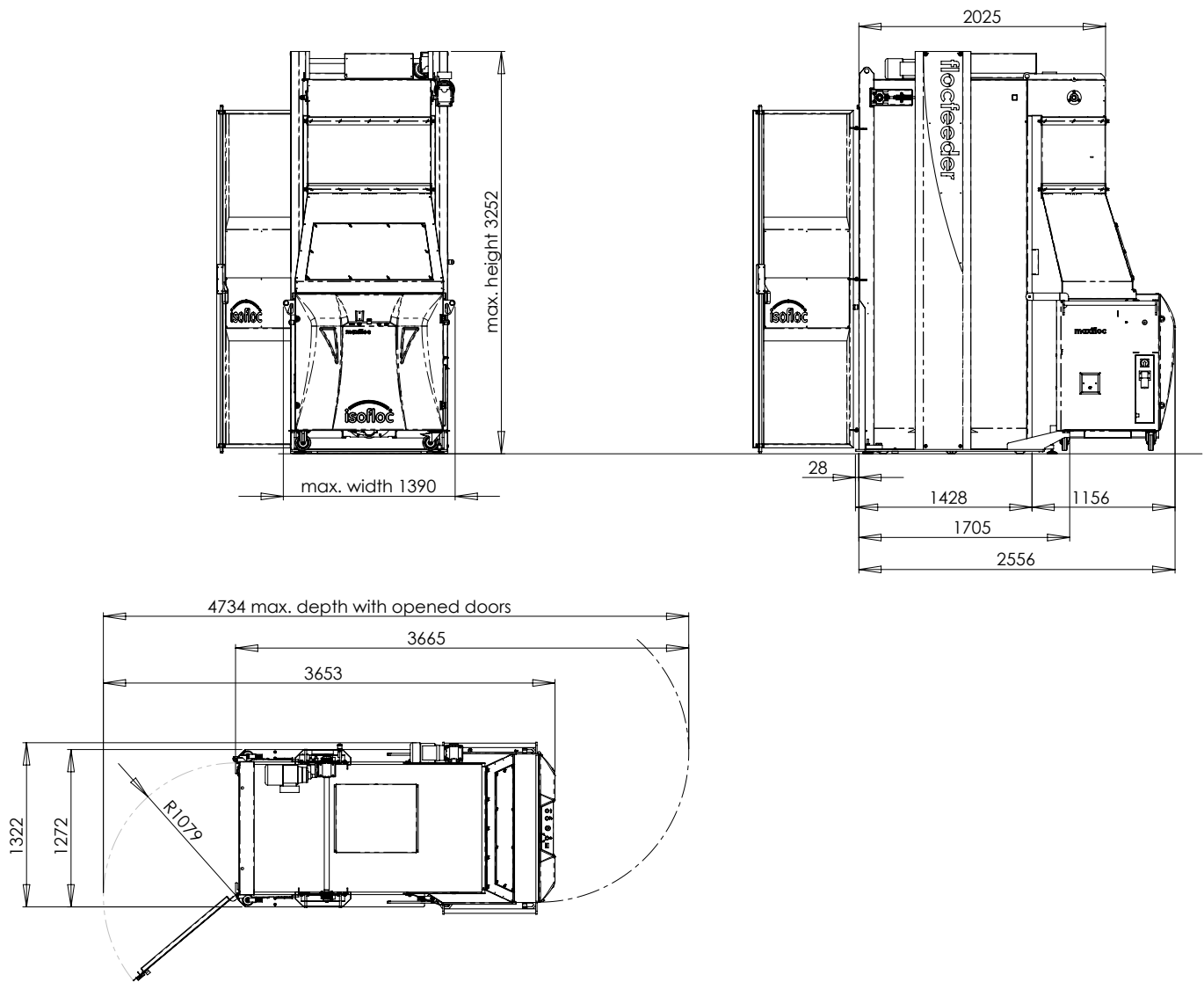
#### We will be happy to answer any questions you might have about flocfeeder:

Michael Hohenstein  
Mollaryd Lättorp 1 - 2  
S-52495 Ljung  
Telefon: +46 (0)31 7999 390  
E-Mail: [michael@hohenstein.se](mailto:michael@hohenstein.se)  
Internet: [www.hohenstein.se](http://www.hohenstein.se)

Technical data for flocfeeder

Standard dimensions:	
Width	Approx. 132.2 cm
Length	Approx. 202.5 cm with delivery chute
Height	approx. 325,2 cm
Weight	approx. 950 kg
Electrical connected load	3 x 400 V / 16 A / 50 Hz
isofloc throughput	2000 kg/h
Insulating material	isofloc cellulose fibres in form of big bales
Control	Integrated PLC with touch screen operation: - adjustment of all operating parameters - display of the operating status

Standard dimensional drawings (with maxifloc)



\* The range of performance and functions may be restricted if third-party machines are used.